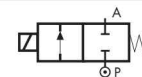


## 2/2 WAY DIRECT ACTING SOLENOID VALVE, G 1/4" ÷ G 1/2"

### COMMON FEATURES

Body material: brass (CW617N EN 12165)  
 Operator material: stainless steel  
 Protection class: IP 65 (with connector and gasket)

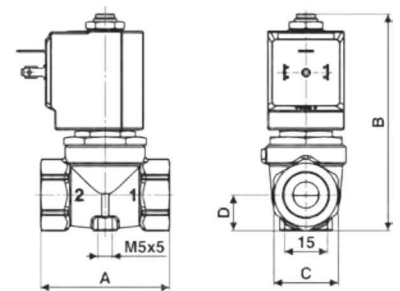
**TYPE: D237/238/239**



Normally Closed



DIMENSIONS & WEIGHTS		D237	D238	D239
<b>G connection</b>	[ISO 228]	1/4"	3/8"	1/2"
<b>A</b>	[mm]	54	54	54
<b>B</b>	[mm]	89	89	89
<b>C</b>	[mm]	Hex 27	Hex 27	Hex 27
<b>D</b>	[mm]	15	15	15
<b>weight</b>	[kg]	0.45	0.4	0.4



Flow direction overseat 1 → 2

VALVE	nominal Ø	flow rate Kvs	OPD		
			min.	max. AC	max. DC
code	[mm]	[l/min]	[barg]	[barg]	[barg]
<b>D237DVU</b>	10.5	21	0	0.4	0.2
<b>D238DVU</b>	10.5	25	0	0.4	0.2
<b>D239DVU</b>	10.5	25	0	0.4	0.2

COILS	
code	[Volts/Hz]
7250	24v DC
7200	24v 50/60Hz
7400	110v 50Hz - 120v 60Hz
7600	200v 50Hz - 220v 60Hz
7700	230v 50Hz - 240v 60Hz

**D237/238/239DVU - FKM seal, NC -**

Media: water, oil, air  
 Media temperature: -10°C ÷ +130°C  
 Ambient temperature: -10°C ÷ +50°C  
 Seal material: FKM  
 Coil power: AC 18va (holding)  
 AC 36va (inrush)  
 DC 14w

#### OPTIONS

**NBR** seal, temperature max. 90°C (e.g. code D237DBU)  
**EPDM** seal, temperature max. 120°C (e.g. code D239DEU)

VALVE	nominal Ø	flow rate Kvs	OPD		
			min.	max. AC	max. DC
code	[mm]	[l/min]	[barg]	[barg]	[barg]
<b>D238DVL</b>	4.0	6	0	8	5
<b>D238DVN</b>	5.0	7.5	0	5	2
<b>D238DVP</b>	6.0	8.5	0	3.5	1.1
<b>D239DVH</b>	3.0	4.5	0	17	12
<b>D239DVL</b>	4.0	6	0	8	5
<b>D239DVN</b>	5.0	7.5	0	5	2
<b>D239DVP</b>	6.0	8.5	0	3.5	1.1

COILS	
code	[Volts/Hz]
7250	24v DC
7200	24v 50/60Hz
7400	110v 50Hz - 120v 60Hz
7600	200v 50Hz - 220v 60Hz
7700	230v 50Hz - 240v 60Hz

**D238/239 - FKM seal, NC -**

Media: water, oil, air  
 Media temperature: -10°C ÷ +130°C  
 Ambient temperature: -10°C ÷ +50°C  
 Orifice material: stainless steel (1.4305 EN 10088/AISI 303)  
 Seal material: FKM  
 Coil power: AC 18va (holding)  
 AC 36va (inrush)  
 DC 14w

#### OPTIONS

**NBR** seal, temperature max. 90°C (e.g. code D239DBP)  
**EPDM** seal, temperature max. 120°C (e.g. code D238DEP)

#### NOTES

Same operator as D262/263DVL-

VALVE	nominal Ø	flow rate Kvs	OPD		
			min.	max. AC	max. DC
code	[mm]	[l/min]	[barg]	[barg]	[barg]
<b>D238DLH</b>	3.0	4.5	0	9	8
<b>D238DLN</b>	5.0	7.5	0	5	2
<b>D239DLI</b>	3.5	5.0	0	9	5

COILS class 'H' only	
code	[Volts/Hz]
7251	24v DC
7201	24v 50/60Hz
7401	110v 50Hz - 120v 60Hz
7601	200v 50Hz - 220v 60Hz
7701	230v 50Hz - 240v 60Hz

**D238/239 - FILLED PTFE seal, NC -**

Media: steam  
 Media temperature: -10°C ÷ +180°C  
 Ambient temperature: -10°C ÷ +70°C  
 Orifice material: stainless steel (1.4305 EN 10088/AISI 303)  
 Seal material: Sigodur (filled PTFE)  
 Coil power: AC 18va (holding)  
 AC 36va (inrush)  
 DC 14w

#### NOTES

Seamless tube as standard  
 Same operator as D262/263DL-