

2/2 WAY DIRECT ACTING SOLENOID VALVE, G 1/8" - G 1/4"

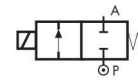
COMMON FEATURES

- Body material: brass (CW617N EN 12165)
- Orifice material: stainless steel (1.4305 EN 10088/AISI 303)
- Operator material: stainless steel
- Protection class: IP 65 (with connector and gasket)

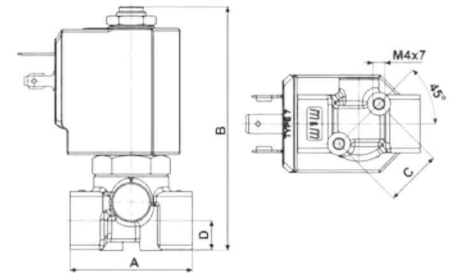
OPTIONS

- Available with body thread connection 1/8" (e.g. code D262DVH), performance ratings remain the same as D263DVH.
- Manual override (e.g. code D262DVCM).

TYPE: D262/263



Normally Closed



Flow direction overseat 1 → 2

DIMENSIONS & WEIGHTS		D262	D263
G connection	[ISO 228]	1/8"	1/4"
A	[mm]	40	40
B	[mm]	77.5	77.5
C	[mm]	18.5	18.5
D	[mm]	9.5	9.5
weight	[kg]	0.26	0.26

VALVE	nominal Ø	flow rate Kvs	OPD			COILS	
			min.	max. AC	max. DC	code	[Volts/Hz]
code	[mm]	[l/min]	[barg]	[barg]	[barg]	code	[Volts/Hz]
D263DVA	1.0	0.5	0	30	30	7250	24v DC
D263DVC	1.5	1.3	0	24	24	7200	24v 50/60Hz
D263DVG	2.5	3.4	0	18	16	7400	110v 50Hz - 120v 60Hz
D263DVH	3.0	4.5	0	15	10	7600	200v 50Hz - 220v 60Hz
D263DVL ^①	4.0	6.0	0	10	5	7700	230v 50Hz - 240v 60Hz
D263DVN ^①	5.0	7.5	0	5	2,5		
D263DVP ^①	6.0	8.0	0	3	1		

① Manual override not available for orifice > Ø 3 mm

D262/263 - FKM seal, NC -

- Media: water, oil, air
- Media temperature: -10°C ÷ +130°C
- Ambient temperature: -10°C ÷ +50°C
- Seal material: foodgrade FKM
- Coil power: AC 18v_A (holding)
AC 36v_A (inrush)
DC 14w

OPTIONS

- EPDM seal, temperature max. 120°C (e.g. code D262DEH)
- For vacuum see page 36
- ATEX version see page 37

VALVE	nominal Ø	flow rate Kvs	OPD			COILS class 'H' only	
			min.	max. AC	max. DC	code	[Volts/Hz]
code	[mm]	[l/min]	[barg]	[barg]	[barg]	code	[Volts/Hz]
D263DLA	1.0	0.5	0	9	9	7251	24v DC
D263DLC	1.5	1.3	0	9	9	7201	24v 50/60Hz
D263DLG	2.5	3.4	0	9	8	7401	110v 50Hz - 120v 60Hz
D263DLH	3.0	4.5	0	9	5	7601	200v 50Hz - 220v 60Hz
						7701	230v 50Hz - 240v 60Hz

D262/263 - FILLED PTFE seal, NC -

- Media: steam
- Media temperature: -10°C ÷ +180°C
- Ambient temperature: -10°C ÷ +70°C
- Seal material: Sigodur (filled PTFE)
- Coil power: AC 18v_A (holding)
AC 36v_A (inrush)
DC 14w

NOTES

- Seamless tube as standard

VALVE	nominal Ø	flow rate Kvs	OPD			COILS high power - class 'H' only	
			min.	max. AC	max. DC	code	[Volts/Hz]
code	[mm]	[l/min]	[barg]	[barg]	[barg]	code	[Volts/Hz]
D263DRB1	1.2	0.7	0	200	60	7221	24v DC
D263DRC1	1.5	1.3	0	200	35	72K1	24v 50/60Hz
D263DRE1	2.0	2.2	0	120	25	74K1	110v 50Hz - 120v 60Hz
D263DRH1	3.0	4.5	0	50	11	77K1	230v 50Hz - 240v 60Hz

D262/263 - RUBY seal, NC -

- Media^②: water, oil, liquids
- Media temperature: -10°C ÷ +130°C
- Ambient temperature: -10°C ÷ +50°C
- Seal material: Ruby
- Coil power: AC 25v_A (holding)
AC 50v_A (inrush)
DC 22w

NOTES

- Seamless tube as standard
- ② Not 100% leak-proof when used with air/gases. Approximate leak rate is 1,5 ml/min at max. OPD.

ATTENTION: When high pressure valves are supplied without a coil, their nameplates display the max. OPD of the valve when equipped with an AC (25v_A) and DC (22w) coil (as shown in the table above).
When using alternative coil power ratings please ensure to request separately the appropriate nameplate at time of order.