

## 2/2 WAY PILOT OPERATED SOLENOID VALVE, G 1/4" ÷ G 1"

### COMMON FEATURES

Media: water, oil, air  
 Media temperature: -10°C ÷ +90°C  
 Ambient temperature: -10°C ÷ +50°C  
 Body material: brass (CW617N EN 12165)  
 Operator material: stainless steel  
 Operator seal and diaphragm material: NBR  
 Protection class: IP 65 (with connector and gasket)

### OPTIONS

FKM seal, temperature max. 130°C (e.g. code B205DVZ)  
 EPDM seal, temperature max. 120°C (e.g. code B204DEZ)  
 Electroless nickel plating treatment (e.g. code B205DBZK)  
 NPT connection on request, minimum batch may be required (e.g. code RB205DBZN)  
 UL approved coils (e.g. code 220R)  
 Speed control screw only for type B206-, B222-, RB206- and RB222- (e.g. code B206DBY / RB222DBY)

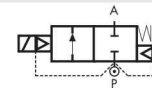
DIMENSIONS & WEIGHTS		B203 B204	B205	B206 compact	B206	B222	RB203 RB204	RB205	RB206 compact	RB206	RB222
<b>G connection</b>	[ISO 228]	1/4" 3/8"	1/2"	3/4"	3/4"	1"	1/4" 3/8"	1/2"	3/4"	3/4"	1"
<b>A</b>	[mm]	67	67	82	96	96	67	67	82	96	96
<b>B</b>	[mm]	90	90	105	115	115	92.5	92.5	107.5	117.5	117.5
<b>C</b>	[mm]	45.6	45.6	51.6	72	72	45.6	45.6	51.6	72	72
<b>D</b>	[mm]	15	15	20.25	23	23	15	15	20.25	23	23
<b>weight</b>	[kg]	0.4	0.4	0.6	1.2	1.2	0.4	0.4	0.6	1.2	1.2

VALVE	nominal Ø	flow rate Kvs	OPD			COILS	
			min.	max. AC	max. DC	code	[Volts/Hz]
code	[mm]	[l/min]	[barg]	[barg]	[barg]	code	[Volts/Hz]
<b>B203DBZ</b>	13	26	0.3	16	16	2250	24v DC
<b>B204DBZ</b>	13	55	0.3	16	16	2200	24v 50/60Hz
<b>B205DBZ</b>	13	63	0.3	16	16	2400	110v 50Hz - 120v 60Hz
<b>B206DBX comp.</b>	21	100	0.3	16	16	2600	200v 50Hz - 220v 60Hz
<b>B206DBY ①</b>	25	140	0.3	16	16	2700	230v 50Hz - 240v 60Hz
<b>B222DBY</b>	25	160	0.3	16	16		

VALVE	nominal Ø	flow rate Kvs	OPD			COILS	
			min.	max. AC	max. DC	code	[Volts/Hz]
code	[mm]	[l/min]	[barg]	[barg]	[barg]	code	[Volts/Hz]
<b>RB203DBZ</b>	13	26	0.3	16	16	2250	24v DC
<b>RB204DBZ</b>	13	55	0.3	16	16	2200	24v 50/60Hz
<b>RB205DBZ</b>	13	63	0.3	16	16	2400	110v 50Hz - 120v 60Hz
<b>RB206DBX comp.</b>	21	100	0.3	16	16	2600	200v 50Hz - 220v 60Hz
<b>RB206DBY ①</b>	25	140	0.3	16	16	2700	230v 50Hz - 240v 60Hz
<b>RB222DBY</b>	25	160	0.3	16	16		

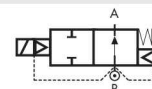
① Product subject to phase-out, please contact M&M Sales Department for availability

### TYPE: B203÷B222

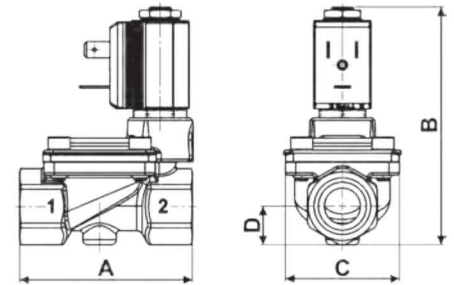


Normally Closed

### TYPE: RB203÷RB222



Normally Open



Flow direction overseat 1 → 2

### B203 ÷ B222 - NBR seal, NC -

Coil power: AC 10va (holding)  
 AC 16va (inrush)  
 DC 7w

### OPTIONS

Manual override (e.g. code B204DBZM)

### RB203 ÷ RB222 - NBR seal, NO -

Coil power: AC 10va (holding)  
 AC 16va (inrush)  
 DC 7w

GENERAL PURPOSE

GENERAL PURPOSE

