

2/2 WAY PILOT OPERATED SOLENOID VALVE, G 3/4" - G 1"

COMMON FEATURES

- Media: steam
- Media temperature: +80°C ÷ +180°C
- Ambient temperature: -10°C ÷ +70°C
- Body material: brass (CW617N EN 12165)
- Operator material: stainless steel
- Orifice material: stainless steel (1.4305 EN 10088/AISI 303)
- Operator seal material: PTFE
- Main seal and diaphragm material: PTFE
- Protection class: IP 65 (with connector and gasket)

OPTIONS

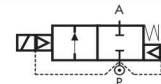
NPT connection on request, minimum batch may be required (e.g. code D622DTYN)

NOTES

- ❶ Water & high content of condensate can damage the diaphragm.
- ❷ For a correct functioning, the minimum working temperature of the solenoid valve cannot be below 80°C.

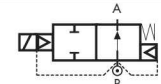
DIMENSIONS & WEIGHTS		D606 RD606	D622 RD622
G connection	[ISO 228]	3/4"	1"
A	[mm]	96	96
B	[mm]	126	126
C	[mm]	72	72
D	[mm]	24	24
weight	[kg]	1.3	1.3

TYPE: D606/622

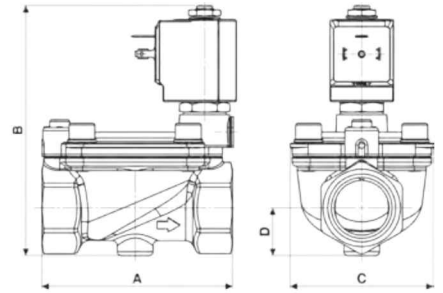


Normally Closed

TYPE: RD606/622



Normally Open



Flow direction overseat 1 → 2

D606/D622 - PTFE seal, NC -

- Coil power: AC 18v_A (holding)
- AC 36v_A (inrush)
- DC 14w

NOTES

Seamless tube as standard

VALVE	nominal Ø	flow rate Kvs	OPD			COILS class 'H' only	
			min.	max. AC	max. DC	code	[Volts/Hz]
code	[mm]	[l/min]	[barg]	[barg]	[barg]	code	[Volts/Hz]
D606DTY	24	120	1	9	9	7151	12v DC
D622DTY	24	120	1	9	9	7251	24v DC
						7201	24v 50/60Hz
						7401	110v 50Hz - 120v 60Hz
						7601	200v 50Hz - 220v 60Hz
						7701	230v 50Hz - 240v 60Hz

VALVE	nominal Ø	flow rate Kvs	OPD			COILS class 'H' only	
			min.	max. AC	max. DC	code	[Volts/Hz]
code	[mm]	[l/min]	[barg]	[barg]	[barg]	code	[Volts/Hz]
RD606DTY	24	120	1	9	9	7151	12v DC
RD622DTY	24	120	1	9	9	7251	24v DC
						7201	24v 50/60Hz
						7401	110v 50Hz - 120v 60Hz
						7601	200v 50Hz - 220v 60Hz
						7701	230v 50Hz - 240v 60Hz

RD606/RD622 - PTFE seal, NO -

- Coil power: AC 18v_A (holding)
- AC 36v_A (inrush)
- DC 14w

